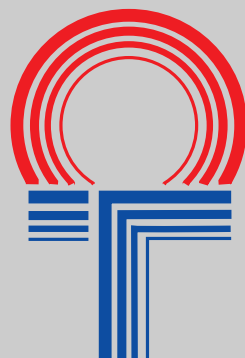


**TABELLE TECNICHE PER PRODOTTI
IN ESECUZIONE SU RICHIESTA**

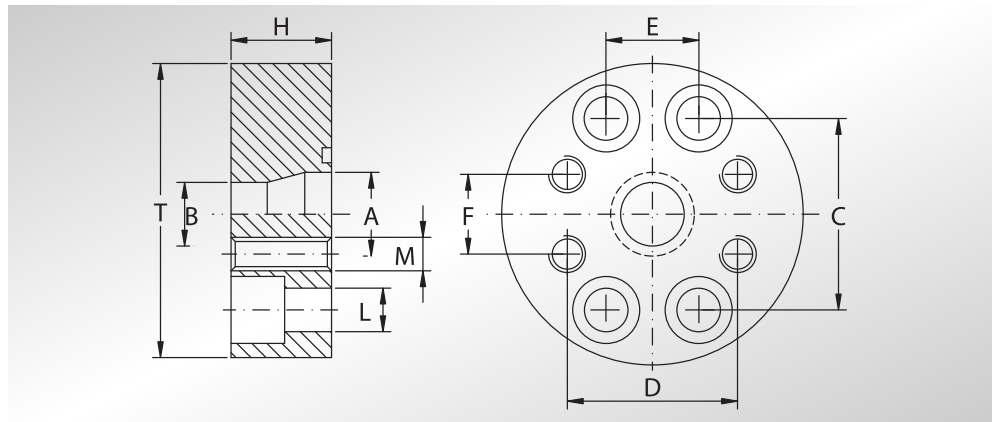
***TECHNICAL TABLES FOR PRODUCTS
ON REQUEST***





ADATTATORE SAE DI RIDUZIONE

SAE REDUCER ADAPTER



Pressione max di esercizio raccomandata Kg/cm ²	Grandezza	Tipo	Dimensioni										Or tipo	Peso Kg
			Dimensions											
Maximum recommended working pressure Kg/cm ²	Size	Type	A	B	C	D	E	F	H	L	M	T	Or type	Weight Kg
			SERIE 3000											
200	1"	RIF102100	25	19	52,37	47,63	26,19	22,23	28	11	M10	80	4131	0,90
200	1"1/4	RIF104102	30	25	58,72	52,37	30,18	26,19	28	11,5	M10	90	4150	1,15
200	1"1/2	RIF106104	38	30	69,85	58,72	35,71	30,18	32	13,5	M10	105,0	4187	1,70
200	2"	RIF108106	50	38	77,77	69,85	42,88	35,71	32	13,5	M12	115,0	4225	2,00
SERIE 6000														
400	1"	RIF403402	25	19	57,15	50,80	27,76	23,80	30	13	M10	90,0	4131	1,20
400	1"1/4	RIF404403	30	25	66,68	57,15	31,75	27,76	35	15	M12	105	4150	2,00
400	1"1/2	RIF405404	38	30	79,38	66,68	36,50	31,75	50	17	M14	120	4187	3,70
400	2"	RIF406405	50	38	96,82	79,38	44,45	36,50	50	21	M16	145	4225	5,40

DESIGNAZIONE PER ORDINE DESIGNATION FOR ORDER

Adattatore
Straight Adapter

Materiale / Material

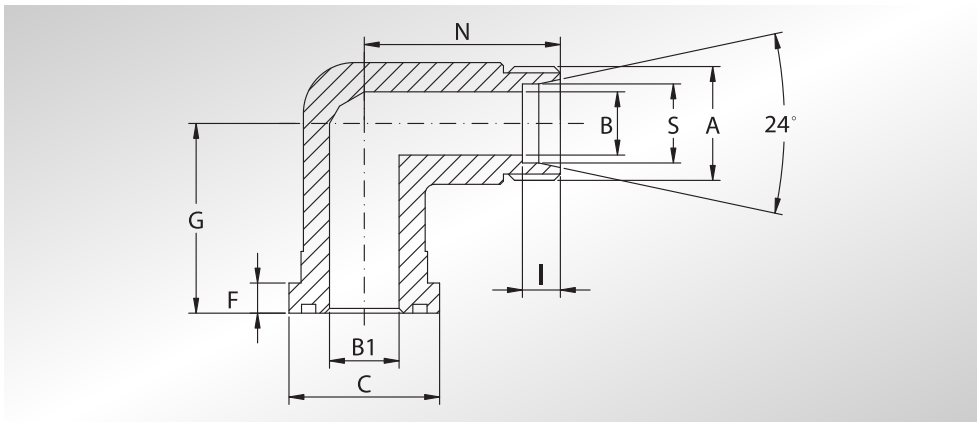
ST52.3

AISI 316L

RIF...

RIFX...

NOTE / NOTES



**CODOLI FILETTATI
METRICI 90°
DIN 3901-3902
ZINCATI**



**90° DIN 3901-3902
METRIC THREADED
YELLOW ZINKED
ADAPTERS**

Pressione max di esercizio raccomandata Kg/cm ²	Grandezza	Tipo	Dimensioni									Or tipo
Maximum recommended working pressure Kg/cm ²	Size	Type	Dimensions									Or type
			A	B	B1	C	F	G	I	N	S	

SERIE 3000

315	1/2"	WFG3001L15	M22x1,5	12	11	30,2	6,73	39	7	36	15	4075
350	1/2"	WFG3001S16	M24x1,5	12	11	30,2	6,73	39	8,5	38	16	4075
315	3/4"	WFG3002L18	M26x1,5	15	19	38,1	6,73	42	7,5	39	18	4100
160	3/4"	WFG3002L22	M30x2	19	19	38,1	6,73	42	7,5	41	22	4100
350	3/4"	WFG3002S20	M30x2	16	19	38,1	6,73	42	10,5	43	20	4100
350	3/4"	WFG3002S25	M36x2	17	19	38,1	6,73	42	12	45	25	4100
160	1"	WFG3003L28	M36x2	24	25	44,4	6,73	45	7,5	44	28	4131
350	1"	WFG3003S25	M36x2	20	25	44,4	8	45	12	50	25	4131
350	1"	WFG3003S30	M42x2	24	25	44,4	8	45	13,5	50	30	4131
160	1"1/4	WFG3004L35	M45x2	30	27	50,8	8	50	10,5	57	35	4150
280	1"1/4	WFG3004S25	M36x2	20	27	50,8	8	50	12	55	25	4150
280	1"1/4	WFG3004S30	M42x2	25	27	50,8	8	50	13,5	57	30	4150
280	1"1/4	WFG3004S38	M52x2	28	27	50,8	8	50	16	59	38	4150
160	1"1/2	WFG3005L42	M52x2	36	36	60,3	8	76	11	67	42	4187
210	1"1/2	WFG3005S38	M52x2	32	36	60,3	8	76	16	72	38	4187

SERIE 6000

400	1/2"	WFG6001S16	M24x1,5	12	12	31,8	7,75	39	8,5	37,9	16	4075
400	3/4"	WFG6002S16	M24x1,5	12	17	41,3	8,76	48	8,5	45	16	4100
400	3/4"	WFG6002S20	M30x2	16	17	41,3	8,76	48	10,5	46	20	4100
400	3/4"	WFG6002S25	M36x2	17	17	41,3	8,76	48	12	48	25	4100
400	1"	WFG6003S25	M36x2	20	24	47,6	9,53	60	12	53	25	4131
400	1"	WFG6003S30	M42x2	24	24	47,6	9,53	60	13,5	55	30	4131
400	1"1/4	WFG6004S30	M42x2	25	31	54,0	10,29	68	13,5	58	30	4150
400	1"1/4	WFG6004S38	M52x2	30	31	54,0	10,29	68	16	61	38	4150
400	1"1/2	WFG6005S38	M52x2	30	36	63,5	12,57	76	16	72	38	4187

**DESIGNAZIONE PER ORDINE
DESIGNATION FOR ORDER**

Codolo con sede o-ring
Adapter with o-ring groove

Materiale / Material

ST52.3

WFG...L/S

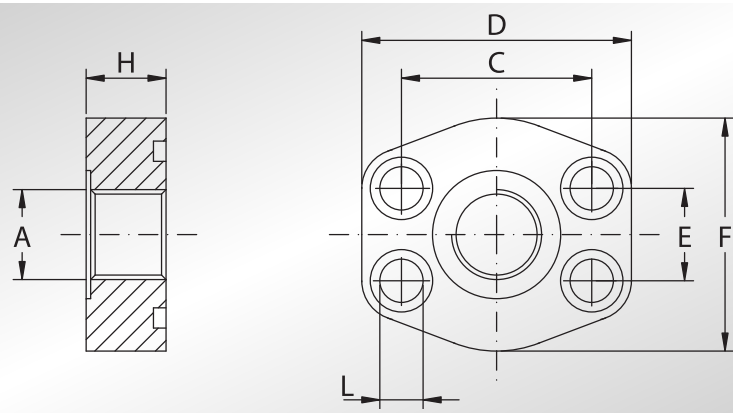
NOTE / NOTES

Rivestimento superficiale : zincatura gialla
Superficial coating : yellow zinking



FLANGE PIATTE FILETTATE GAS

BSP THREADED FLAT FLANGES



Pressione max di esercizio raccomandata Kg/cm ²	Grandezza	Tipo	Dimensioni							Viti		Or tipo	Peso Kg
Maximum recommended working pressure Kg/cm ²	Size	Type	Dimensions							Screws		Or type	Weight Kg
			A	C	D	E	F	H	L	Metric	Unc		

SERIE 3000

345	1"	AFC102G	1" GAS	52,37	70	26,19	60	19	11	M10x35	3/8x1"1/2	4131	0,42
345	1"	AFC102G034	3/4" GAS	52,37	70	26,19	60	19	11	M10x35	3/8x1"1/2	4131	0,42
276	1"1/4	AFC104G	1"1/4 GAS	58,72	79	30,18	68	19	11,5	M10x40	7/16x1"3/4	4150	0,55
276	1"1/4	AFC104G100	1" GAS	58,72	79	30,18	68	19	11,5	M10x40	7/16x1"3/4	4150	0,55
207	1"1/2	AFC106G	1"1/2 GAS	69,85	93	35,71	78	19	13,5	M12x45	1/2x1"3/4	4187	0,82
207	1"1/2	AFC106G114	1"1/4 GAS	69,85	93	35,71	78	19	13,5	M12x45	1/2x1"3/4	4187	0,82
207	2"	AFC108G	2" GAS	77,77	102	42,88	90	19	13,5	M12x45	1/2x1"3/4	4225	1,08
207	2"	AFC108G112	1"1/2 GAS	77,77	102	42,88	90	19	13,5	M12x45	1/2x1"3/4	4225	1,08
172	2"1/2	AFC110G	2"1/2 GAS	88,90	114	50,80	105	19	13,5	M12x45	1/2x1"3/4	4275	1,40
173	2"1/2	AFC110G200	2" GAS	88,90	114	50,80	105	19	13,5	M12x45	1/2x1"3/4	4275	1,40
138	3"	AFC112G	3" GAS	106,38	134	61,93	124	23	17,5	M16x50	5/8x2"	4337	2,40
138	3"	AFC112G212	2"1/2 GAS	106,38	134	61,93	124	23	17,5	M16x50	5/8x2"	4337	2,40
34	3"1/2	AFC114G	3"1/2 GAS	120,65	152	69,85	136	21	17,5	M16x50	5/8x2"	4387	2,80
34	3"1/2	AFC114G300	3" GAS	120,65	152	69,85	136	21	17,5	M16x50	5/8x2"	4387	2,80
34	4"	AFC116G	4" GAS	130,18	162	77,77	146	24	17,5	M16x50	5/8x2"	4437	3,90
34	4"	AFC116G312	3"1/2 GAS	130,18	162	77,77	146	24	17,5	M16x50	5/8x2"	4437	3,90

SERIE 6000

414	3/4"	AFC402G012	1/2" GAS	50,80	71	23,80	60	19	11	M10x40	3/8x1"1/2	4100	0,42
414	1"	AFC403G	1" GAS	57,15	81	27,76	70	23	13	M12x45	7/16x1"3/4	4131	0,77
414	1"	AFC403G034	3/4" GAS	57,15	81	27,76	70	23	13	M12x45	7/16x1"3/4	4131	0,77
414	1"1/4	AFC404G	1"1/4 GAS	66,68	95	31,75	78	26	15 *	M14x45	1/2x1"3/4	4150	1,16
414	1"1/4	AFC404G100	1" GAS	66,68	95	31,75	78	26	15 *	M14x45	1/2x1"3/4	4150	1,16
414	1"1/2	AFC405G	1"1/2 GAS	79,38	112	36,50	94	29	17	M16x50	5/8x2"	4187	1,82
414	1"1/2	AFC405G114	1"1/4 GAS	79,38	112	36,50	94	29	17	M16x50	5/8x2"	4187	1,82
414	2"	AFC406G	2" GAS	96,82	134	44,45	114	28	21	M20x70	3/4x2"1/2	4225	2,57
414	2"	AFC406G112	1"1/2 GAS	96,82	134	44,45	114	28	21	M20x70	3/4x2"1/2	4225	2,57
414	2"1/2	AFC507G (*)	2"1/2 GAS	123,80	180	58,70	152	45	26	M24x80	—	4275	—
414	3"	AFC508G (*)	3" GAS	152,40	208	71,40	178	55	33	M30x100	—	4337	—

DESIGNAZIONE PER ORDINE DESIGNATION FOR ORDER	Materiale / Material	
	ST52.3	AISI 316L
Solo flangia Only flange	AFC...G	AFCX...G
Flangia completa di viti metriche, grower e o-ring Flange complete of metric screws, grower type washers and o-ring	AFC...GM	AFCX...GM
Flangia completa di viti unc, grower e o-ring Flange complete of unc screws, grower type washers and o-ring	AFC...GU	AFCX...GU

NOTE / NOTES

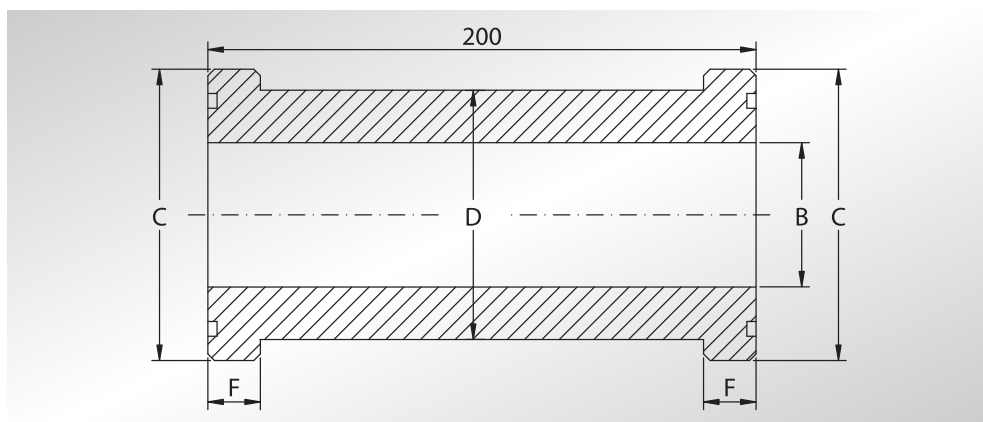
* Per viti unc L=13,5
* For unc screws L=13,5

(*) Solo in ST52.3
(*) Only in ST52.3

set viti unc disponibili solo in acciaio al carbonio.
unc screws set available only in carbon steel.



DOUBLE ADAPTERS



Pressione max di esercizio raccomandata Kg/cm ²	Grandezza	Tipo	Dimensioni				Or tipo
Maximum recommended working pressure Kg/cm ²	Size	Type	Dimensions				Or type
			B	C	D	F	

SERIE 3000

345	3/4"	SFS302D	19	38,1	32	6,73	4100
345	1"	SFS303D	25	44,4	38	8,00	4131
276	1"1/4	SFS304D	32	50,8	43	8,00	4150
207	1"1/2	SFS305D	38	60,3	50	8,00	4187
207	2"	SFS306D	50	71,4	62	9,53	4225

SERIE 6000

414	3/4"	SFS602D	19	41,3	32	8,76	4100
414	1"	SFS603D	25	47,6	38	9,53	4131
414	1"1/4	SFS604D	32	54,0	44	10,29	4150
414	1"1/2	SFS605D	38	63,5	51	12,57	4187
414	2"	SFS606D	50	79,4	67	12,57	4225

DESIGNAZIONE PER ORDINE DESIGNATION FOR ORDER	Materiale / Material	
	A105 o similare (or similar)	AISI 316L

Doppio codolo Double adapter	SFS...D	SFX...D
---------------------------------	----------------	----------------

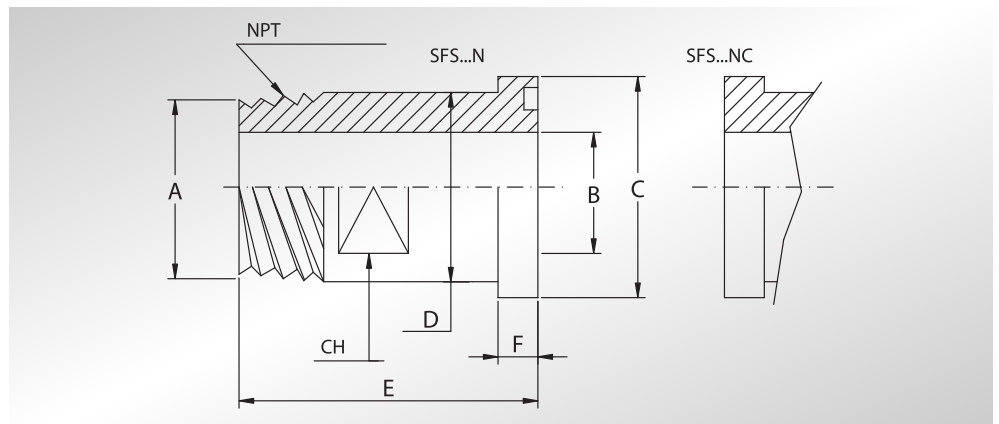
NOTE / NOTES





**CODOLI
FILETTATI NPT**

**NPT THREADED
ADAPTERS**



Pressione max di esercizio raccomandata Kg/cm ²	Grandezza	Tipo	Dimensioni							Or tipo	Peso Kg
Maximum recommended working pressure Kg/cm ²	Size	Type	Dimensions							Or type	Weight Kg
			A	B	C	D	E	F	CH		

SERIE 3000

345	1/2"	SFS301N	1/2"	12	30,2	24	50	6,73	19	4075	0,08
345	3/4"	SFS302N	3/4"	17	38,1	32	55	6,73	27	4100	0,16
345	1"	SFS303N	1"	22	44,4	38	60	8,00	32	4131	0,23
276	1"1/4	SFS304N	1"1/4	27	50,8	43	65	8,00	41	4150	0,30
207	1"1/2	SFS305N	1"1/2	32	60,3	50	70	8,00	46	4187	0,40
207	2"	SFS306N	2"	40	71,4	62	75	9,53	55	4225	0,50

SERIE 6000

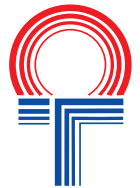
414	1/2"	SFS601N	1/2"	12	31,8	24	50	7,75	19	4075	0,08
414	3/4"	SFS602N	3/4"	17	41,3	32	60	8,76	26	4100	0,15
414	1"	SFS603N	1"	22	47,6	38	70	9,53	32	4131	0,23
414	1"1/4	SFS604N	1"1/4	27	54,0	44	75	10,29	36	4150	0,30
414	1"1/2	SFS605N	1"1/2	32	63,5	51	80	12,57	41	4187	0,50
414	2"	SFS606N	2"	40	79,4	67	90	12,57	55	4225	0,80

DESIGNAZIONE PER ORDINE DESIGNATION FOR ORDER	Materiale / Material	
	A105 o similare (or similar)	AISI 316L
Codolo con sede o-ring Adapter with o-ring groove	SFS...N	SFX...N
Codolo senza sede o-ring Adapter without o-ring groove	SFS...NC	SFX...NC

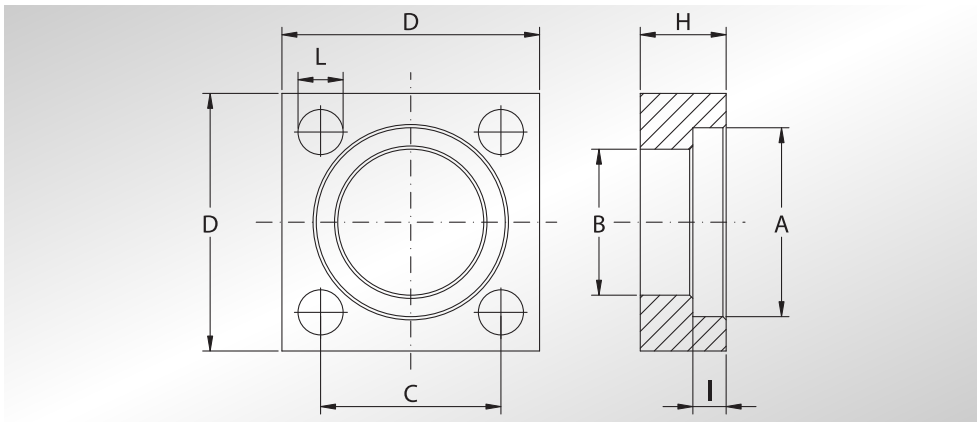
NOTE / NOTES

Rivestimento superficiale: zincatura gialla.
Superficial coating: yellow zinking.

**FLANGE QUADRE
ISO 6164**



**SQUARE FLANGES
ISO 6164**



Pressione max di esercizio raccomandata Kg/cm ²	Grandezza	Tipo	Dimensioni							Peso Kg
Maximum recommended working pressure Kg/cm ²	Size	Type	Dimensions							Weight Kg
			A	B	C	D	H	I	L	
SERIE 6000										
400	2"	Q2ST400	80,2	67,60	69,4	100	40	12,2	17,5	1,26
400	2"1/2	Q212ST400	95,0	80,50	83,4	120	50	16,1	22	2,37
400	3"	Q3ST400	111,0	90,50	102,5	150	52	16,1	26	3,20
400	4"	Q4ST400	136,0	114,50	127	180	70	21,0	33	9,95

DESIGNAZIONE PER ORDINE DESIGNATION FOR ORDER	Materiale / Material A105 o similare (or similar)
--	--

NOTE / NOTES

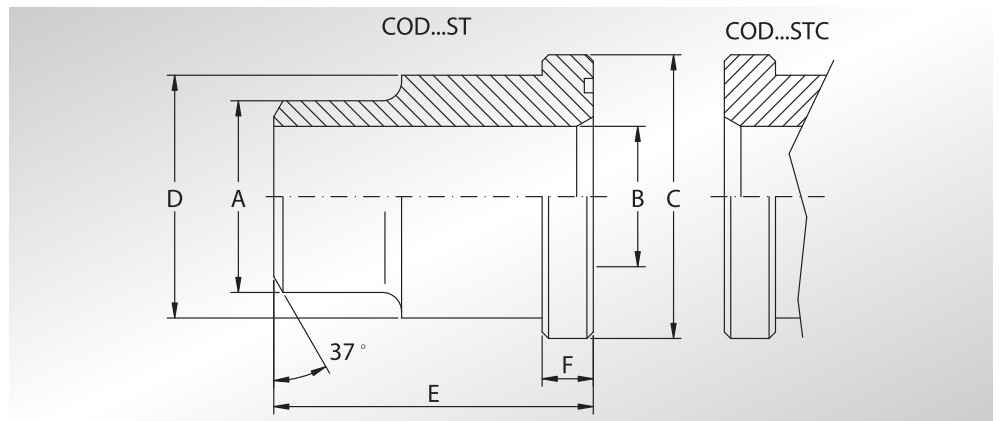
Solo flangia Only flange	Q...ST400

--	--



CODOLI A SALDARE DI TESTA ISO 6164

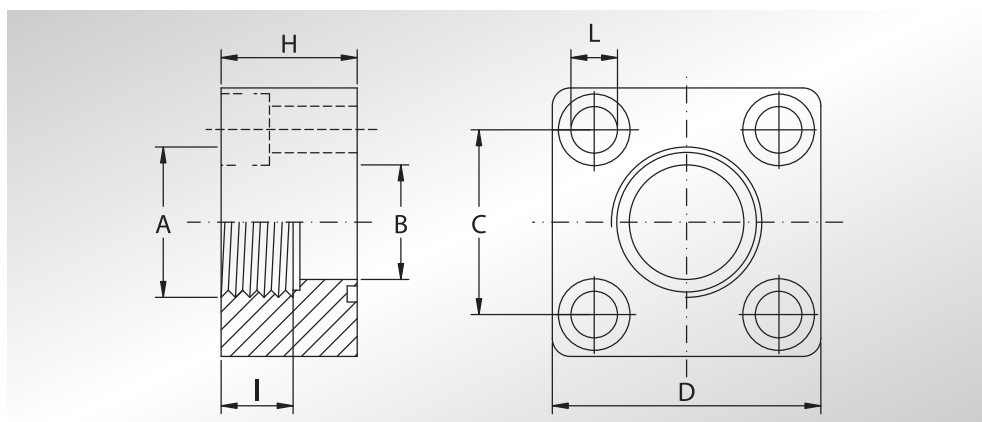
WELD ON ADAPTERS ISO 6164



Pressione max. di esercizio raccomandata Kg/cm ²	Grandezza	Tipo	Dimensioni						Or tipo	Peso Kg
			Dimensions							
Maximum recommended working pressure Kg/cm ²	Size	Type	A	B	C	D	E	F	Or type	Weight Kg
			SERIE 6000							
400	2"	ISO2ST400	61	43	79,4	67	100	13,7	6225	1,6
400	2"1/2	ISO212ST400	73	53	94,2	80	110	17,6	6275	2,65
400	3"	ISO3ST400	90	58	104,0	90	120	18	6300	3,8
400	4"	ISO4ST400	114	74	131,0	114	140	23,5	6350	6,35

DESIGNAZIONE PER ORDINE DESIGNATION FOR ORDER	Materiale / Material	
	A105 o similare (or similar)	AISI 316L
Codolo con sede o-ring Adapter with o-ring groove	ISO...ST	ISOX...ST
Codolo senza sede o-ring Adapter without o-ring groove	ISO...STC	ISOX...STC

NOTE / NOTES



Pressione max di esercizio raccomandata Kg/cm ²	Grandezza	Tipo	Dimensioni								Viti	Or tipo	Peso Kg
Maximum recommended working pressure Kg/cm ²	Size	Type	Dimensions								Screws	Or type	Weight Kg
			A	B	C	D	H	I	L	Metric			
SERIE 3000 / 6000													
400	3/8"	CETA38G	3/8" GAS	13	24,7	40	23	13	6,5	M8x40	3068	0,20	
400	1/2"	CETA12G	1/2" GAS	13	29,7	45	32	15	8,5	M8x45	4075	0,22	
400	3/4"	CETA34G	3/4" GAS	19	35,3	50	32	18	8,5	M8x45	4100	0,30	
400	1"	CETA1G	1" GAS	25	43,8	65	36	20	11	M10x50	4131	0,58	
400	1"1/4	CETA114G	1"1/4 GAS	32	51,6	75	38	22	13	M12x55	4150	0,90	
400	1"1/2	CETA112G	1"1/2 GAS	38	60,0	85	42	24	15	M14x65	4187	1,30	
400	2"	CETA2G	2" GAS	51	69,4	100	44	27	17	M16x70	4225	1,80	

**DESIGNAZIONE PER ORDINE
DESIGNATION FOR ORDER**

Materiale / Material

A105 o similare (or similar)

Solo flangia
Only flange

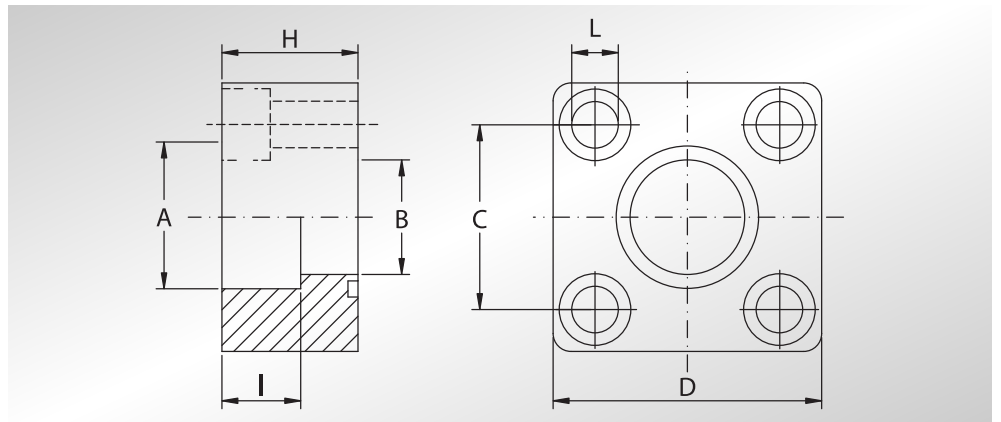
CETA...G

NOTE / NOTES



FLANGE CETOP A SALDARE DI TASCA

WELD IN CETOP FLANGES



Pressione max di esercizio raccomandata Kg/cm ²	Grandezza	Tipo	Dimensioni							Viti	Or tipo
Maximum recommended working pressure Kg/cm ²	Size	Type	Dimensions							Screws	Or type
			A	B	C	D	H	I	L	Metric	
SERIE 3000 / 6000											
400	1/2"	CET12S	21,60	13	29,7	45	32	13	8,5	M8x45	4075
400	3/4"	CET34S	27,20	19	35,3	50	32	14	8,5	M8x45	4100
400	1"	CET1S	34,50	25	43,8	65	36	16	11	M10x50	4131
400	1"1/4	CET114S	42,80	32	51,6	75	38	18	13	M12x55	4150
400	1"1/2	CET112S	48,60	38	60,0	85	42	20	15	M14x65	4187
400	2"	CET2S	61,00	51	69,4	100	44	22	17	M16x70	4225
400	2"1/2	CET212S	77,00	63	83,4	120	48	24	21	M20x80	4275
400	3"	CET32S	91,00	73	102,5	140	55	28	21	M20x90	4337
400	4"	CET4S	115,00	99	113,2	160	60	30	25	M24x100	4387

DESIGNAZIONE PER ORDINE
DESIGNATION FOR ORDER

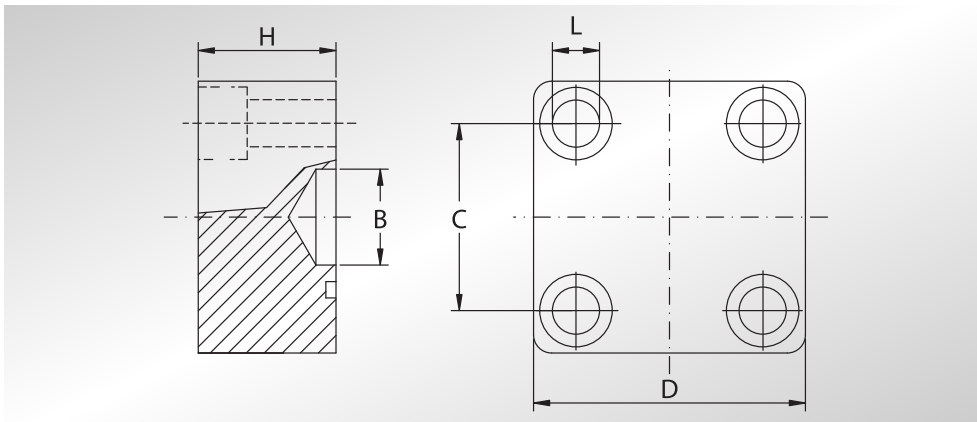
Materiale / Material

A105 o similare (or similar)

NOTE / NOTES

Solo flangia
Only flange

CET...S



Pressione max di esercizio raccomandata Kg/cm ²	Grandezza	Tipo	Dimensioni					Viti	Or tipo
Maximum recommended working pressure Kg/cm ²	Size	Type	Dimensions					Screws	Or type
			B	C	D	H	L	Metric	
SERIE 3000 / 6000									
400	1/2"	CET12C	14	29,7	45	32	8,5	M8x45	4075
400	3/4"	CET34C	19	35,3	50	32	8,5	M8x45	4100
400	1"	CET1C	25	43,8	65	35	11	M10x50	4131
400	1"1/4	CET114C	30	51,6	75	38	13	M12x55	4150
400	1"1/2	CET112C	36	60,0	85	42	15	M14x65	4187
400	2"	CET2C	45	69,4	100	44	17	M16x70	4225
400	2"1/2	CET212C	58	83,4	120	55	21	M20x80	4275
400	3"	CET32C	60	102,5	140	60	21	M20x90	4337
400	4"	CET4C	70	113,2	160	60	25	M24x100	4387

**DESIGNAZIONE PER ORDINE
DESIGNATION FOR ORDER**

Solo flangia
Only flange

Materiale / Material
A105 o similare (or similar)

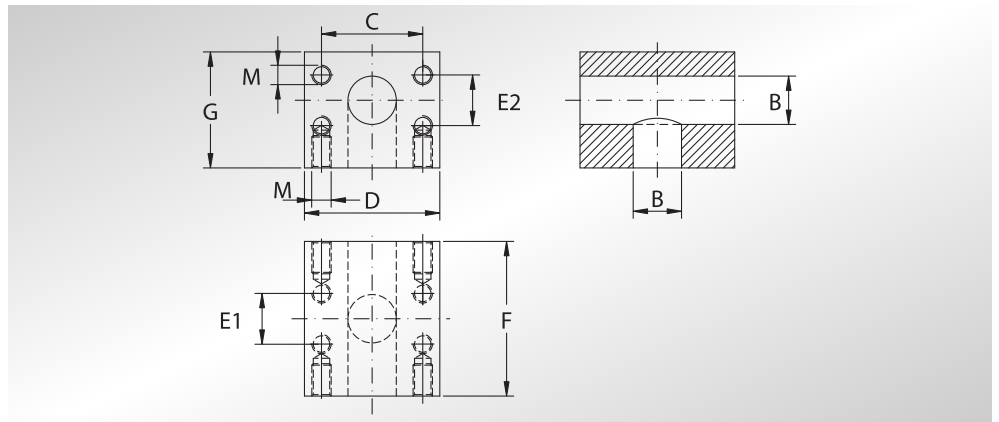
CET...C

NOTE / NOTES



BLOCCHI SAE A "T"

SAE "T" BLOCKS



Pressione max di esercizio raccomandata Kg/cm ²	Grandezza	Tipo	Dimensioni								Peso Kg
			Dimensions								
Maximum recommended working pressure Kg/cm ²	Size	Type	B	C	D	E1	E2	F	G	M	Weight Kg

SERIE 3000

345	3/4"	TBL302302	19	47,60	65	22,23	22,23	75	55	M10	1,80
345	1"	TBL303303	25	52,37	70	26,19	26,19	80	60	M10	2,30
276	1"1/4	TBL304304	32	58,79	80	30,18	30,18	90	70	M10	3,90
207	1"1/2	TBL305305	38	69,85	95	35,71	35,71	110	85	M12	6,30
207	2"	TBL306306	50	77,77	110	42,88	42,88	120	100	M12	8,30

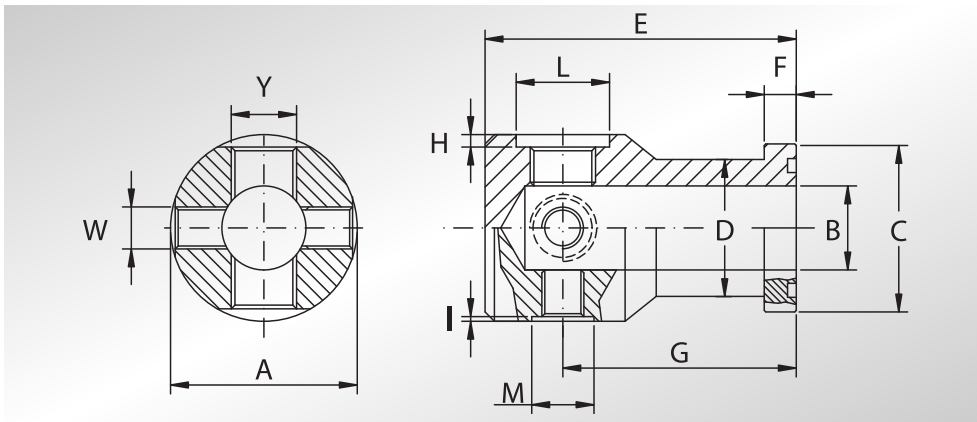
SERIE 6000

400	3/4"	TBL602602	19	50,80	72	23,80	23,80	70	55	M10	1,70
400	1"	TBL603603	23	57,15	82	27,76	27,76	80	64	M12	2,90
400	1"1/4	TBL604604	30	66,68	100	31,75	31,75	92	72	M14	3,80
400	1"1/2	TBL605605	38	79,38	110	36,50	36,50	98	100	M16	8,90
400	2"	TBL606606	50	98,82	133	44,45	44,45	140	105	M20	12,70

DESIGNAZIONE PER ORDINE DESIGNATION FOR ORDER	Materiale / Material A105 o similare (or similar)
--	--

Blocco sae Sae block	TBL.....
-------------------------	----------

NOTE / NOTES



Tipo	Dimensioni													Or tipo
Type	Dimensions													Or type
	A	B	C	D	E	F	G	H	I	L	M	W	Y	
SERIE 3000														
COL303	54	22	44,4	38	100	8	75	4	1,5	30	21	1/4" GAS	3/4" GAS	4131
COL304	64	28	50,8	43	100	8	75	4	1,5	30	21	1/4" GAS	3/4" GAS	4150
COL305	70	32	60,3	50	100	8	75	4	1,5	30	21	1/4" GAS	3/4" GAS	4187
COL306	80	50	71,4	62	100	9,53	75	4	1,5	30	21	1/4" GAS	3/4" GAS	4225
SERIE 6000														
COL603	64	25	47,6	38	100	9,53	75	4	1,5	30	21	1/4" GAS	3/4" GAS	4131
COL604	64	27	54,0	44	100	10,29	75	4	1,5	30	21	1/4" GAS	3/4" GAS	4150
COL605	70	32	63,5	51	100	12,57	75	4	1,5	30	21	1/4" GAS	3/4" GAS	4187
COL606	80	45	79,4	67	110	12,57	85	4	1,5	30	21	1/4" GAS	3/4" GAS	4225

**DESIGNAZIONE PER ORDINE
DESIGNATION FOR ORDER**

Il codolo può essere costruito secondo le esigenze con 1 o 2 o 3 o 4 fori con dimensioni da 1/4" a 3/4" gas

The adapter can be made in accordance with the needs with 1 or 2 or 3 or 4 holes with dimensions from 1/4" to 3/4"

Materiale / Material

A105 o similare (or similar)

ES.: COL604Y3/4 (1 FORO)

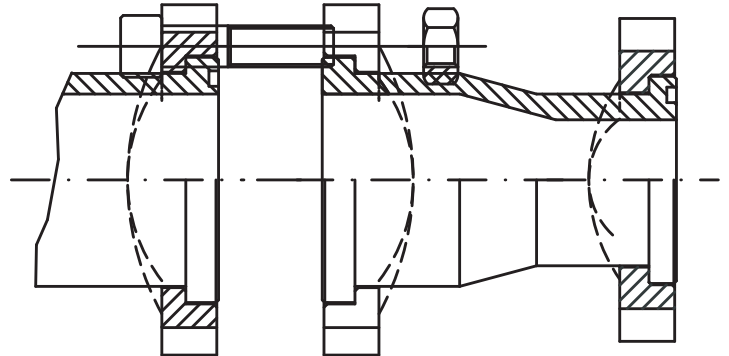
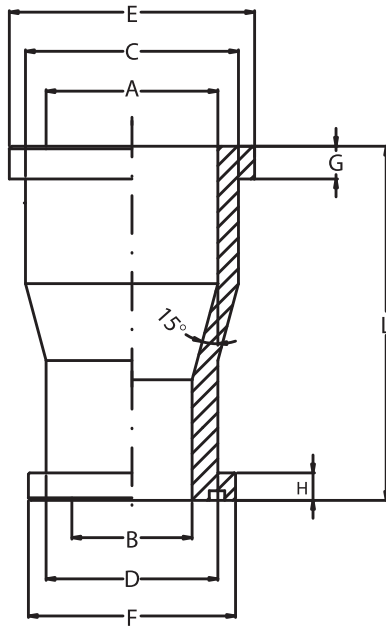
EX.: COL 604Y3/4 (1 HOLE)

NOTE / NOTES



**TABELLA TECNICA PER
DIMENSIONI CODOLO
DI RIDUZIONE**

**TECHNICAL TABLE FOR
DIMENSIONS OF
REDUCER ADAPTER**



SCHEMA DI APPLICAZIONE
SCHEME OF APPLICATION

CLIENTE / CUSTOMER: _____

COMPILARE LA TABELLA CON LE DIMENSIONI
CHE SERVONO.

FILL THE TABLE WITH THE DIMENSIONS
YOU NEED

A	B	C	D	E	F	G	H	L

UFF. TECN. UFF. PROD.	FORGIATO	SCALA	DISEGNATO	DATA :
O - RING	VITE	SERIE	BAR	
OLEO TECNICA SRL		DESCRIZIONE : CODOLO DI RIDUZIONE		
VIA GEROMINA 6/B FRAZ. GEROMINA 24047 TREVIGLIO (BG) TEL. 0363/40447		DISEGNO N. : SFS ___ / ___		